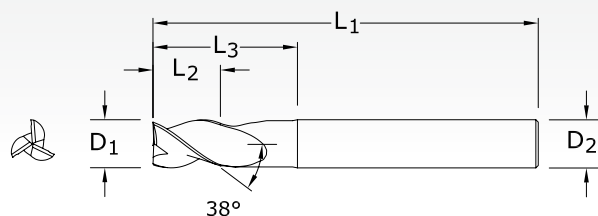


S-Carb End Mills

**43L**

FRACTIONAL SERIES

TECH INFO 92



NON-FERROUS

PLASTICS/COMPOSITES

CUTTING DIAMETER D ₁	LENGTH OF CUT L ₂	inch			EDP NO.	
		OVERALL LENGTH L ₁	SHANK DIAMETER D ₂	REACH L ₃	UNCOATED	TI-NAMITE-B (TiB ₂)
1/8	5/32	3	1/8	1/2	32700	32725
3/16	7/32	3	3/16	1/2	32701	32726
1/4	3/8	4	1/4	3/4	32702	32727
1/4	3/8	4	1/4	1-1/2	32703	32728
1/4	3/8	4	1/4	2-1/8	32704	32729
5/16	7/16	4	5/16	1-1/8	32705	32730
5/16	7/16	4	5/16	2-1/8	32706	32731
3/8	1/2	4	3/8	1-1/8	32707	32732
3/8	1/2	4	3/8	2-1/8	32708	32733
1/2	5/8	4	1/2	1-3/8	32709	32734
1/2	5/8	6	1/2	2-1/8	32710	32735
1/2	5/8	6	1/2	3-3/8	32711	32736
5/8	3/4	4	5/8	1-3/4	32712	32737
5/8	3/4	4	5/8	2-3/8	32713	32738
5/8	3/4	6	5/8	3-3/8	32714	32739
3/4	1	4	3/4	1-3/4	32715	32740
3/4	1	6	3/4	2-3/8	32716	32741
3/4	1	6	3/4	3-3/8	32717	32742
1	1-1/4	6	1	2-3/8	32718	32743
1	1-1/4	6	1	3-3/8	32719	32744
1	1-1/4	7	1	4-3/8	32720	32745

TOLERANCES (inch)

1/8–3/16 DIAMETERD₁ = +0.0000/–0.00032D₂ = h₆**1/4–3/8 DIAMETER**D₁ = +0.0000/–0.00035D₂ = h₆**1/2–5/8 DIAMETER**D₁ = +0.0000/–0.00043D₂ = h₆**3/4–1 DIAMETER**D₁ = +0.0000/–0.00051D₂ = h₆