

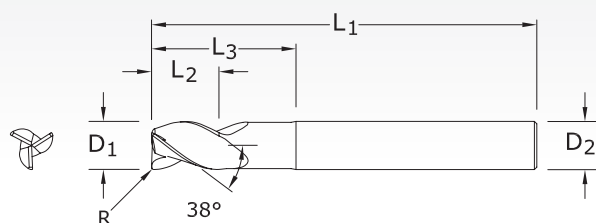
S-Carb End Mills



43LC

FRACTIONAL SERIES

TECH INFO 71



NON-FERROUS

PLASTICS/COMPOSITES

inch						EDP NO.	
CUTTING DIAMETER D ₁	LENGTH OF CUT L ₂	OVERALL LENGTH L ₁	SHANK DIAMETER D ₂	REACH L ₃	CORNER RADIUS R	UNCOATED	Ti-NAMITE-B (TiB ₂)
1/8	5/32	3	1/8	1/2	0.010	32751	32815
3/16	7/32	3	3/16	1/2	0.010	32752	32816
1/4	3/8	4	1/4	3/4	0.010	32753	32817
1/4	3/8	4	1/4	3/4	0.030	32754	32818
1/4	3/8	4	1/4	1-1/2	0.010	32755	32819
1/4	3/8	4	1/4	1-1/2	0.030	32756	32820
1/4	3/8	4	1/4	2-1/8	0.010	32757	32821
1/4	3/8	4	1/4	2-1/8	0.030	32758	32822
5/16	7/16	4	5/16	1-1/8	0.030	32759	32823
5/16	7/16	4	5/16	2-1/8	0.030	32760	32824
3/8	1/2	4	3/8	1-1/8	0.030	32762	32826
3/8	1/2	4	3/8	1-1/8	0.060	32763	32827
3/8	1/2	4	3/8	2-1/8	0.030	32764	32828
3/8	1/2	4	3/8	2-1/8	0.060	32765	32829
1/2	5/8	4	1/2	1-3/8	0.030	32767	32831
1/2	5/8	4	1/2	1-3/8	0.060	32768	32832
1/2	5/8	4	1/2	1-3/8	0.090	32769	32833
1/2	5/8	4	1/2	1-3/8	0.120	32770	32834
1/2	5/8	6	1/2	2-1/8	0.030	32771	32835
1/2	5/8	6	1/2	2-1/8	0.060	32772	32836
1/2	5/8	6	1/2	2-1/8	0.090	32773	32837
1/2	5/8	6	1/2	2-1/8	0.120	32774	32838
1/2	5/8	6	1/2	3-3/8	0.030	32775	32839
1/2	5/8	6	1/2	3-3/8	0.060	32776	32840
1/2	5/8	6	1/2	3-3/8	0.090	32777	32841
1/2	5/8	6	1/2	3-3/8	0.120	32778	32842

continued on next page

TOLERANCES (inch)

1/8-3/16 DIAMETERD₁ = +0.000/-0.00032D₂ = h₆

R = +0.000/-0.002

1/4-3/8 DIAMETERD₁ = +0.000/-0.00035D₂ = h₆

R = +0.000/-0.002

1/2-5/8 DIAMETERD₁ = +0.000/-0.00043D₂ = h₆

R = +0.000/-0.002

3/4-1 DIAMETERD₁ = +0.000/-0.00051D₂ = h₆

R = +0.000/-0.002

