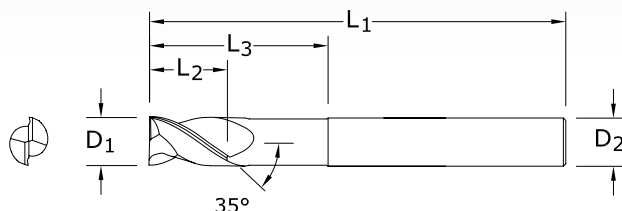




S-Carb End Mills



TOLERANCES (mm)

3-25 DIAMETER

$D_1 = +0,0025/-0,010$

$D_2 = h_6$

47M & 47MES

METRIC SERIES

| mm | | | | | EDP NO. | |
|---------------------------|------------------------|-------------------------|-------------------------|----------------|----------|---------------------------------|
| CUTTING DIAMETER D_1 | LENGTH OF CUT L_2 | OVERALL LENGTH L_1 | SHANK DIAMETER D_2 | REACH L_3 | UNCOATED | TI-NAMITE-B (TiB ₂) |
| 3,0 | 8,0 | 38,0 | 3,0 | | 44550 | 44587 |
| 4,0 | 11,0 | 50,0 | 4,0 | | 44551 | 44588 |
| 5,0 | 13,0 | 50,0 | 5,0 | | 44552 | 44589 |
| 6,0 | 13,0 | 57,0 | 6,0 | | 44553 | 44590 |
| 6,0 | 10,0 | 100,0 | 6,0 | 54,0 | 44561 | 44609 |
| 8,0 | 19,0 | 63,0 | 8,0 | | 44554 | 44591 |
| 8,0 | 12,0 | 100,0 | 8,0 | 54,0 | 44562 | 44610 |
| 10,0 | 22,0 | 72,0 | 10,0 | | 44555 | 44592 |
| 10,0 | 12,0 | 100,0 | 10,0 | 54,0 | 44563 | 44611 |
| 12,0 | 26,0 | 83,0 | 12,0 | | 44556 | 44593 |
| 12,0 | 16,0 | 150,0 | 12,0 | 80,0 | 44564 | 44612 |
| 14,0 | 26,0 | 83,0 | 14,0 | | 44557 | 44594 |
| 16,0 | 32,0 | 92,0 | 16,0 | | 44558 | 44595 |
| 16,0 | 20,0 | 150,0 | 16,0 | 80,0 | 44565 | 44613 |
| 20,0 | 38,0 | 104,0 | 20,0 | | 44559 | 44596 |
| 20,0 | 25,0 | 150,0 | 20,0 | 80,0 | 44566 | 44614 |
| 25,0 | 44,0 | 104,0 | 25,0 | | 44560 | 44597 |

TECH INFO 56

NON-FERROUS

PLASTICS/COMPOSITES

Any radii available – 7-10 day delivery