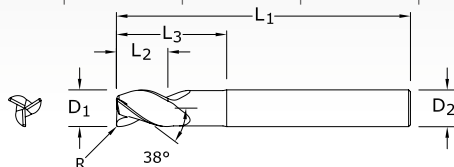




S-Carb End Mills



TOLERANCES (mm)

6 DIAMETER

$D_1 = +0,000/-0,008$

$D_2 = h_6$

$R = +0,000/-0,050$

>6-10 DIAMETER

$D_1 = +0,000/-0,009$

$D_2 = h_6$

$R = +0,000/-0,050$

>10-18 DIAMETER

$D_1 = +0,000/-0,011$

$D_2 = h_6$

$R = +0,000/-0,050$

>18-20 DIAMETER

$D_1 = +0,000/-0,013$

$D_2 = h_6$

$R = +0,000/-0,050$

43M & 43MCR

METRIC SERIES

TECH INFO 56

mm						EDP NO.	
CUTTING DIAMETER D_1	LENGTH OF CUT L_2	OVERALL LENGTH L_1	SHANK DIAMETER D_2	REACH L_3	CORNER RADIUS R	UNCOATED	Ti-NAMITE-B (TiB ₂)
6,0	13,0	57,0	6,0			44701	44715
6,0	13,0	57,0	6,0		1,5		44732
6,0	13,0	72,0	6,0			44702	44716
6,0	10,0	75,0	6,0	20,0			42706
6,0	10,0	63,0	6,0	20,0	0,5	44769	44789
6,0	10,0	63,0	6,0	20,0	1,0	44770	44790
6,0	13,0	72,0	6,0	30,0	0,5	44771	44791
6,0	13,0	72,0	6,0	30,0	1,0	44772	44792
8,0	19,0	63,0	8,0			44703	44717
8,0	12,0	75,0	8,0	25,0			42707
8,0	12,0	75,0	8,0	25,0	0,3	44773	44793
8,0	12,0	75,0	8,0	25,0	0,5	44774	44794
8,0	12,0	75,0	8,0	25,0	1,0	44775	44795
8,0	12,0	75,0	8,0	25,0	1,5	44776	44796
10,0	22,0	72,0	10,0			44705	44719
10,0	14,0	100,0	10,0	35,0			42708
10,0	14,0	100,0	10,0	35,0	0,3	44777	44797
10,0	14,0	100,0	10,0	35,0	0,5	44778	44798
10,0	14,0	100,0	10,0	35,0	1,0	44779	44799
10,0	14,0	100,0	10,0	35,0	1,5	44780	44800
12,0	26,0	83,0	12,0			44708	44722
12,0	26,0	83,0	12,0		1,5	44814	44733
12,0	26,0	83,0	12,0		2,0	44815	44826
12,0	26,0	83,0	12,0		2,5	44816	44827
12,0	26,0	83,0	12,0		3,0	44817	44734
12,0	16,0	100,0	12,0	40,0			42709
12,0	16,0	100,0	12,0	40,0	0,5	44781	44801
12,0	16,0	100,0	12,0	40,0	1,0	44782	44802
12,0	16,0	100,0	12,0	40,0	1,5	44783	44803
12,0	16,0	100,0	12,0	40,0	2,0	44784	44804
12,0	16,0	100,0	12,0	40,0	2,5	44832	44839
12,0	16,0	100,0	12,0	40,0	3,0	44833	44738
12,0	16,0	100,0	12,0	40,0	4,0	44834	44741
16,0	32,0	92,0	16,0			44711	44725
16,0	32,0	92,0	16,0		1,5	44818	44735
16,0	32,0	92,0	16,0		2,0	44819	44828
16,0	32,0	92,0	16,0		2,5	44820	44829
16,0	32,0	92,0	16,0		3,0	44821	44736
16,0	20,0	125,0	16,0	50,0			42710
16,0	20,0	125,0	16,0	50,0	2,0	44785	44805
16,0	20,0	125,0	16,0	50,0	2,5	44835	44840
16,0	20,0	125,0	16,0	50,0	3,0	44836	44739
16,0	20,0	125,0	16,0	50,0	4,0	44786	44806
20,0	38,0	104,0	20,0			44714	44728
20,0	38,0	104,0	20,0		2,0	44822	44830
20,0	38,0	104,0	20,0		2,5	44823	44831
20,0	38,0	104,0	20,0		3,0	44824	44737
20,0	25,0	150,0	20,0	65,0			42711
20,0	25,0	150,0	20,0	65,0	2,0	44787	44807
20,0	25,0	150,0	20,0	65,0	2,5	44837	44841
20,0	25,0	150,0	20,0	65,0	3,0	44838	44740
20,0	25,0	150,0	20,0	65,0	4,0	44788	44808
25,0	50,0	125,0	25,0				44731

NON-FERROUS
PLASTICS/COMPOSITES

Any radii available – 7-10 day delivery