

51ML

METRIC SERIES

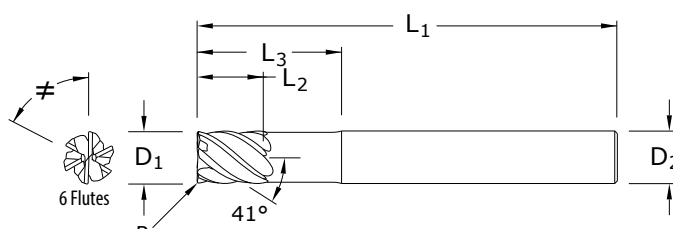
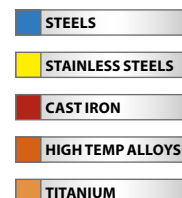
TECH INFO 48

TOLERANCES (mm)

6-20 DIAMETER

 $D_1 = +0,000/-0,050$
 $D_2 = h_6$

mm					EDP NO.
CUTTING DIAMETER D_1	LENGTH OF CUT L_2	OVERALL LENGTH L_1	SHANK DIAMETER D_2	REACH	Ti-NAMITE-X (AlTiN)
6	8	75	6	32	45106
8	10	75	8	32	45107
10	12	100	10	40	45108
12	15	100	12	48	45109
16	20	115	16	65	45110
20	24	150	20	80	45111



51MLC

METRIC SERIES

TECH INFO 48

TOLERANCES (mm)

6-20 DIAMETER

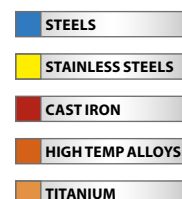
 $D_1 = +0,000/-0,050$
 $D_2 = h_6$

CORNER RADIUS

TOLERANCES (mm)

 $R = +0,000/-0,050$

mm						EDP NO.
CUTTING DIAMETER D_1	LENGTH OF CUT L_2	OVERALL LENGTH L_1	SHANK DIAMETER D_2	REACH	CORNER RADIUS R	Ti-NAMITE-X (AlTiN)
6	8	75	6	32	0,5	45127
8	10	75	8	32	0,5	45128
8	10	75	8	32	1,0	45129
10	12	100	10	40	1,0	45130
10	12	100	10	40	1,5	45131
10	12	100	10	40	2,0	45132
12	15	100	12	48	1,0	45133
12	15	100	12	48	1,5	45134
12	15	100	12	48	2,0	45135
16	20	115	16	65	1,0	45136
16	20	115	16	65	1,5	45137
16	20	115	16	65	2,0	45138
20	24	150	20	80	1,0	45139
20	24	150	20	80	1,5	45140
20	24	150	20	80	2,0	45141



Any radii available – 7-10 day delivery